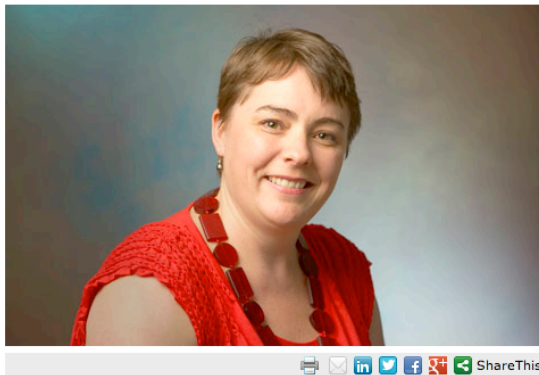


✓

- Thank you for registering with Business News, you will receive an email verification shortly asking you to choose your password. Please also check your spam folder or junk email folder.
- This is your 1st of 8 free articles this month and your articles will refresh on Sun, 07/07/2013 - 13:53. To subscribe to Business News, [Click here](#)

## Santos' Wallace wins national scholarship

Dan Wilkie 07-Jun-2013 01:47pm



### BUSINESSNEWSIQ BETA

#### Santos

#### WA export revenue in most recent financial year

12 <sup>th</sup>	Cliffs Natural Resources	\$1.36bn
13 <sup>th</sup>	Tronox	\$900.0m
14 <sup>th</sup>	<b>Santos</b>	<b>\$860.0m</b>
15 <sup>th</sup>	Iluka Resources	\$829.0m
16 <sup>th</sup>	Mount Gibson Iron	\$649.0m

27 WA exporters ranked by wa export revenue most recent financial year



#### Barnett talks up Asian trade

AAP 07 Jun 2013



#### Consumer confidence plunges

AAP 07 Jun 2013

**W**omen's professional development and executive mentoring group Behind Closed Doors has nominated the first Western Australian recipient of its Luminaries scholarship.

Santos WA and Northern Territory commercial manager Natalie Wallace was announced as the scholarship winner, ahead of runners-up Kylie Judd, from Brookfield Multiplex, and AMEC Australia business development manager Gayle Bowness.

Ms Wallace will receive a \$7,000 scholarship after making a significant mark on the traditionally male-dominated oil and gas industry.

BCD managing director Donny Walford said Ms Wallace had demonstrated the skills and intellect to go much further in the industry.

"She was promoted into a leadership position at Santos just 12 months ago and now heads a commercial team supporting some \$3 billion in assets through joint venture and customer relationship management, negotiations of commercial opportunities, business planning and strategy contributions," Ms Walford said.

"The Luminaries scholarship will, over the next 12 months, provide Natalie with access to insights, knowledge, support and high level networks, and, in the process, help to pave the way towards executive and board positions."